

# Astrawireless Quanta Q6-28

## PRODUCT DATASHEET

### Description

Quanta Q6-28 is 6 GHz point-to-point unit with integrated antenna 28 dBi

### Antenna

Integrated dual-pol antenna, 28 dBi, 5x5 deg

### Recommended distance

Up to 80 km

### Frequency range

6000-6425 MHz

### Channel width

3.5, 5, 7, 10, 14, 15, 20, 28, 30, 40, 50, 56 MHz

### Net throughput

Up to 650 Mbps in 56 MHz  
Up to 460 Mbps in 40 MHz  
Up to 230 Mbps in 20 MHz

### Packet performance

1 200 000 pps

### Transmit power

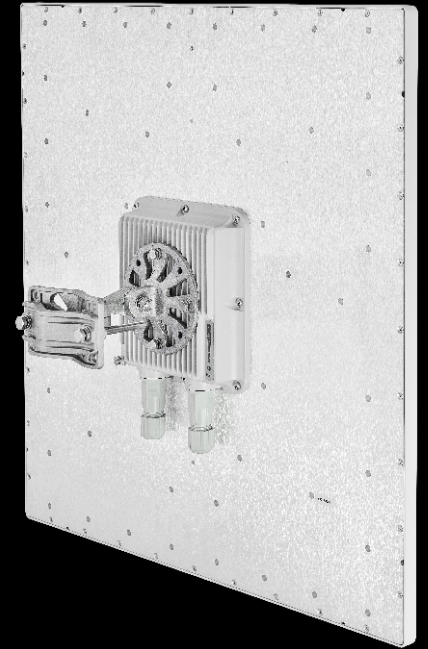
from -10 to 27 dBm\*, step 1 dBm

### Receiver sensitivity

down to -101 dBm

### Center frequency adjustment step

1 MHz



\*May be limited by regional EIRP restrictions

# Astrawireless Quanta Q6-28

## PRODUCT DATASHEET

**Wired Interfaces** 1x Combo port GigabitEthernet/SFP

---

**Duplex scheme** TDD

---

**Consumption** Up to 15 W

---

**Power options** 90-240 VAC ~ @ 50/60 Hz, +-43.56 VDC

---

**Part Number Example** Q6-28

---

**Form Factor and Dimensions** Outdoor Unit (ODU)  
600 x 600 x 68 mm, 5.8 kg

---

Indoor Unit IDU-CPE-G (24W)  
97 x 53.5 x 35.5 mm 0.133 kg

---

**Packing List**

- Outdoor unit Q6-28 - 1 pcs
- Power Supply IDU-CPE-G(24W) - 1 pcs
- Power Cord - 1 pcs
- Cable Gland for RJ-45 - 1 pcs
- Cable Gland for SFP - 1 pcs
- Standard RJ-45 connector - 1 pcs
- Shielded RJ-45 connector - 1 pcs
- RJ-45 Plug Cap - 1 pcs
- MONT-KIT-85 Mounting kit - 1 pcs
- Quick Start Guide - 1 pcs



# RADIO FEATURES

- **Radio technology**  
MIMO 2x2, SC-FDE
- **Modulation types**  
14 MCS – from QPSK 1/4 to QAM256 7/8
- **Spectrum Analyzer mode**  
Channel testing tools
- **DFS / Radar detection**
- **Air frame Configurable**  
1, 2, 5, 10 ms
- **Uplink / Downlink ratio Configurable**  
from 50:50 to 92:8, in any direction
- **Automatic Bitrate Control**  
**Automatic Transmit Power Control**  
**Automatic Distance Learning**

Unique interference mitigation capabilities

Built-in spectrum analyzer and antenna alignment tools

Easy operation due to automatic control options

# NETWORKING FEATURES

- **MAC**  
VLAN 802.1q
- **Quality of Service**  
IEEE 802.1p support  
8 priority queues
- **Full-fledged 2nd layer switch**
- **Transparent L2 transport for Ethernet traffic**



# MANAGEMENT AND SECURITY

■ **Various Management Protocols**  
HTTP, HTTPS, SSH, Telnet, SNMP v1/2c/3 (MIB-II and proprietary MIBs)

■ Antenna alignment tool  
Automatic software update  
Online monitoring with EMS NEXT  
WEB GUI

■ **Safety & Security**  
Storm/flood protection  
Password protection  
Secure CLI access via SSH protocol

■ **LED Indication**  
Power status  
Wireless and wired link status  
Signal level

# STANDARD COMPLIANCE

■ **Radio**  
ETSI EN 301 893 v.2.1.1  
ETSI EN 302 502 v.2.1.1  
FCC part 15.407

■ **EMC**  
ETSI EN 301 489-1  
ETSI EN 301 489-17  
FCC Part 15 Class B

■ **Safety**  
EN 62368-1:2014+A11:2017  
UL 62368-1:2014  
**RoHS3**  
RoHS3 Directive 2015/863/EU (pending)

■ **Lightning protection**  
IEC 61000-4-2: +/-4kV (contact discharge), +/-8kV (air discharge)  
IEC 61000-4-4: +/-0.5kV  
IEC 61000-4-5: +/-1kV (line-to-ground), +/-0.5kV (line-to-line)

# OPERATION OPTIONS

■ **Power options**  
90–240 VAC @ 50/60 Hz  
±43.56 VDC  
802.3at or Proprietary PoE

■ **Outdoor Unit environmental conditions**  
-40..+60°C, can be extended to -55..+60°C (models with "t" index in PN)  
100% humidity, condensing  
Dust and water protection IP66, IP67  
Wind load 160 km/h, operational; 200 km/h, survival

■ **Indoor Unit environmental conditions**  
0..+40°C  
95% humidity, non-condensing

