

Astrawireless Quanta Q5-28

PRODUCT DATASHEET

Description

Quanta Q5-28 is 5 GHz point-to-point unit with integrated antenna 28 dBi

Antenna

Integrated dual-pol antenna, 28 dBi, 5x5 deg

Recommended distance

Up to 80 km

Frequency range

4900-6000 MHz

Channel width

3.5, 5, 7, 10, 14, 15, 20, 28, 30, 40, 50, 56 MHz

Net throughput

Up to 650 Mbps in 56 MHz
Up to 460 Mbps in 40 MHz
Up to 230 Mbps in 20 MHz

Packet performance

1 200 000 pps

Transmit power

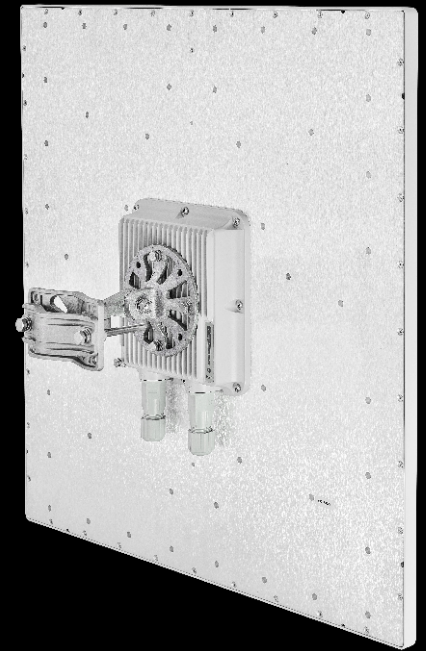
from -10 to 27 dBm*, step 1 dBm

Receiver sensitivity

down to -101 dBm

Center frequency adjustment step

1 MHz



Astrawireless Quanta Q5-28

PRODUCT DATASHEET

Wired Interfaces 1x Combo port GigabitEthernet/SFP

Duplex scheme TDD, H-FDD

Consumption Up to 15 W

Power options 90-240 VAC ~ @ 50/60 Hz, +-43.56 VDC

Part Number Example Q5-28

Form Factor and Dimensions **Outdoor Unit (ODU)**
600 x 600 x 68 mm, 5.8 kg

Indoor Unit IDU-CPE-G (24W)
97 x 53.5 x 35.5 mm 0.133 kg

Packing List

- Outdoor unit Q5-28- 1 pcs
- Power Supply IDU-CPE-G(24W) - 1 pcs
- Power Cord - 1 pcs
- Cable Gland for RJ-45 - 1 pcs
- Cable Gland for SFP - 1 pcs
- Standard RJ-45 connector - 1 pcs
- Shielded RJ-45 connector - 1 pcs
- RJ-45 Plug Cap - 1 pcs
- MONT-KIT-85 Mounting kit - 1 pcs
- Quick Start Guide - 1 pcs



RADIO FEATURES

- **Radio technology**
MIMO 2x2, SC-FDE
- **Modulation types**
14 MCS – from QPSK 1/4 to QAM256 7/8
- **Spectrum Analyzer mode**
Channel testing tools
- **DFS / Radar detection / Instant DFS**
- **Air frame Configurable**
1, 2, 5, 10 ms
- **Uplink / Downlink ratio Configurable**
from 50:50 to 92:8, in any direction
- **Automatic Bitrate Control**
Automatic Transmit Power Control
Automatic Distance Learning

Unique interference mitigation capabilities

Built-in spectrum analyzer and antenna alignment tools

Easy operation due to automatic control options

NETWORKING FEATURES

- **MAC**
VLAN 802.1q
- **Quality of Service**
IEEE 802.1p support
8 priority queues
- **Full-fledged 2nd layer switch**
- **Transparent L2 transport for Ethernet traffic**



MANAGEMENT AND SECURITY

■ Various Management Protocols HTTP, HTTPS, SSH, Telnet, SNMP v1/2c/3 (MIB-II and proprietary MIBs)	■ Antenna alignment tool Automatic software update Online monitoring with EMS NEXT WEB GUI	■ Safety & Security Storm/flood protection Password protection Secure CLI access via SSH protocol	■ LED Indication Power status Wireless and wired link status Signal level
--	--	--	--

STANDARD COMPLIANCE

■ Radio ETSI EN 301 893 v.2.1.1 ETSI EN 302 502 v.2.1.1 FCC part 15.407	■ EMC ETSI EN 301 489-1 ETSI EN 301 489-17 FCC Part 15 Class B	■ Safety EN 62368-1:2014+A11:2017 UL 62368-1:2014 ■ RoHS3 RoHS3 Directive 2015/863/EU (pending)	■ Lightning protection IEC 61000-4-2: +/-4kV (contact discharge), +/-8kV (air discharge) IEC 61000-4-4: +/-0.5kV IEC 61000-4-5: +/-1kV (line-to-ground), +/-0.5kV (line-to-line)
--	---	---	--

OPERATION OPTIONS

■ Power options 90–240 VAC @ 50/60 Hz ±43.56 VDC 802.3at or Proprietary PoE	■ Outdoor Unit environmental conditions -40..+60°C, can be extended to -55..+60°C (models with "t" index in PN) 100% humidity, condensing	■ Indoor Unit environmental conditions 0..+40°C 95% humidity, non-condensing
--	---	--

