

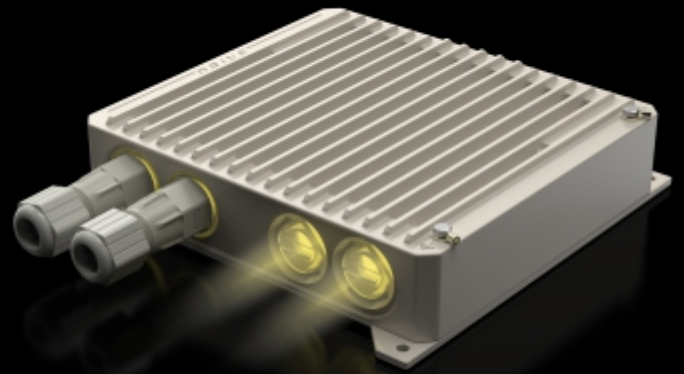
ASTRADRIVE

Terminal Unit

GENERATION 1

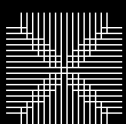
PRODUCT DATASHEET

The Terminal Unit delivers carrier-grade wireless connectivity with throughput up to 800 Mbps. New DRIVE network technology for seamless roaming at speeds of up to 400km/h.



Supports hardware and software modifications, new algorithms for aggregation and quick switching of the moving objects. Purpose-built for mission-critical applications in rail, mining and port operations, this rugged terminal ensures continuous communication while withstanding extreme conditions, heavy vibration and temperatures from -55°C to +60°C.

Net throughput	Up to 800 Mbps in 80 MHz
Transmit power	Up to 25 dBm
Part number example	E6-TU



Astrawireless

Manufacture: ASTRA WIRELESS TECHNOLOGY FZ-LLC
Brand: ASTRAWIRELESS

TECHNICAL SPECIFICATION

Net throughput	up to 800 Mbps in 80 Mhz up to 380 Mbps in 40 Mhz up to 220 Mbps in 20 Mhz
Packet performance	180 000 pps
Transmit power*	up to 25 dBm
Receiver sensitivity	down to -90 dBm
Antenna gain	2xN-type connectors
Frequency range**	4900-6425 Mhz
Channel width	20, 40, 80 MHz
Center frequency adjustment step	1 MHz
Power consumption	up to 15 W
Recommended distances	10+ km

*May be limited by regional EIRP restrictions

**May be limited by regional frequency restrictions



Astrawireless

Astra Wireless Technology. All rights reserved.
www.astrawireless.net
sales@astrawireless.net

Astra Wireless Technology FZ-LLC T1-4F-63,
RAKEZ AMENITY CENTER AL HAMRA
INDUSTRIAL ZONE-FZ RAK, UAE

RADIO FEATURES

- Adaptive TDMA air protocol
 - Dynamic and fixed air frame duration
 - Subscriber activity aware scheduling
 - Permanent channel testing
- Air frame Configurable
 - From 1 to 10 ms
 - Uplink / Downlink ratio Configurable from 50:50 to 92:8, in any direction
- Voice/RTP Aware Superpacketing
 - DFS / Radar detection / Instant DFS
- Channel Time Adjustment
 - Spectrum Analyzer mode
 - Channel testing tools
- Automatic Bitrate Control
 - Automatic Transmit Power Control
 - Automatic Distance Measurement

NETWORKING FEATURES

- Switching
 - Full-fledged 2nd layer switch
 - VLAN 802.1Q, 802.1ad
 - IGMP Snooping
 - MAC/IP filtering, L2/L3 Firewall
 - STP, RSTP support
- Quality of Service
 - IEEE 802.1p, IP TOS/DiffServ support
 - 17 priority queues
 - Full voice support
 - Auto priority of multicast
 - Traffic limiting (absolute, relative)
- Routing
 - ARP protocol support
 - NAT (multipool, H.323-aware)
 - DHCP client/server/relay
 - ODR routing protocol
 - RIPv2 / OSPFv2 /static routing
 - Ethernet-over-IP and IP-over-IP tunnels
- Own network infrastructure
 - Proprietary MINT network protocol
 - Pseudo-radio interface



Astrawireless

Astra Wireless Technology. All rights reserved.
www.astrawireless.net
sales@astrawireless.net

Astra Wireless Technology FZ-LLC T1-4F-63,
RAHEZ AMENITY CENTER AL HAMRA
INDUSTRIAL ZONE-FZ RAK, UAE

MANAGEMENT AND SECURITY

Management features

- Various Management Protocols: HTTP, HTTPS, SSH, Telnet, SNMP v1/2c/3 (MIB-II and proprietary MIBs)
- Graphical User Interface
- Antenna alignment tool
- Automatic software update
- Online monitoring with proprietary EMS NEXT

Safety & Security

- Storm/flood protection
- Password protection
- Secure CLI access via SSH protocol
- AES-128/256 (pending)

LED Indication

- Power status, wired link status

STANDARD COMPLIANCE

Radio

- ETSI EN 301 893 v.2.1.1
- ETSI EN 302 502 v.2.1.1
- FCC part 15.407

Safety

- EN 62368-1:2014+A11:2017
- UL 62368-22:2017
- EN 62311:2008

RoHS3

- EN IEC 63000:2018

EMC

- ETSI EN 301 489-1 v.2.2.3
- ETSI EN 301 489-17 v.3.2.4
- FCC Part 15 Class B

Lightning protection

- IEC 61000-4-2:
+/-4kV (contact discharge),
+/-8kV (air discharge)
- IEC 61000-4-4:
+/-0.5kV IEC 61000-4-5:
+/-1kV (line-to-ground),
+/-0.5kV (line-to-line)

OPERATION OPTIONS

Outdoor Unit conditions

- -40..+60°C, can be extended to -55..+60°C (models with "t" index)
- 100% humidity, condensing
- Dust and water protection: IP56, IP67
- Wind load: 160 km/h operational; 200 km/h survival

Indoor Unit conditions

- 0..+40°C
- 95% humidity, non-condensing
- Cooling: fanless design corrugated aluminium