

Astrawireless Quasar Qsr5-Ep

PRODUCT DATASHEET

Description Quasar Qsr5-Ep, 5 GHz point-to-point unit with 2x N-type (F) connectors

Antenna external, need waveguide with 2x N-type (F) connectors

Recommended distance up to 50 km

Frequency range* 4900-6060 MHz

Channel width 20, 40, 80, 160 MHz

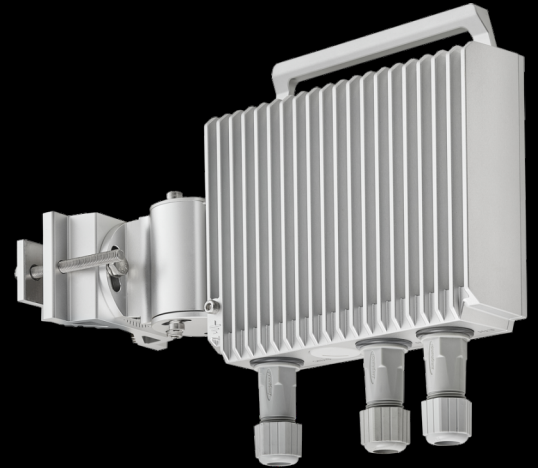
Net throughput up to 2100 Mbps in 160 Mhz
up to 1100 Mbps in 80 MHz

Transmit power** up to 30 dBm, step 1 dBm

Receiver sensitivity down to -93 dBm

Center frequency adjustment step 1 MHz

Multiple access Polling, TDD



*May be limited by regional frequency restrictions

**May be limited by regional EIRP restrictions

Astrawireless Quasar Qsr5-Ep

PRODUCT DATASHEET

Wired Interfaces 1x 2,5 Gigabit Ethernet port (RJ45),
1x 10 Gigabit SFP, 1x DC IN, 1x Sync

Consumption Up to 30 W

Power options 90-240 VAC ~ @ 50/60 Hz, +-43.56 VDC

Part Number Example Qsr5-Ep

Form Factor and Dimensions **Outdoor Unit (ODU)**
200 x 191 x 69 mm, 2.2 kg

Indoor Unit IDU-CPE-G (56W)
137,5 x 62,5 x 33 mm, 0.24 kg

Packing List

- Outdoor unit Qsr5-Ep - 1 pcs
- Power Supply IDU-CPE-G(56W) - 1 pcs
- Power Cord - 1 pcs
- Cable Gland for RJ-45 - 2 pcs
- Cable Gland for SFP - 1 pcs
- Standard RJ-45 connector - 1 pcs
- Shielded RJ-45 connector - 1 pcs
- RJ-45 Plug Cap - 1 pcs
- MONT-KIT-85 Mounting kit - 1 pcs
- Quick Start Guide - 1 pcs

RADIO FEATURES

- **Radio technology**
MIMO 2x2, OFDM 64/128
- **Automatic Bitrate Control**
Automatic Transmit Power Control
Automatic Distance Learning
- **Modulation types**
From BPSK 1/2 to QAM 4096 5/6
- **Channel Time Adjustment**
Channel testing tools
- **Voice/RTP Aware Superpacketing**
- **Spectrum Analyzer mode**

Wide range of network settings

Multi-kilometer gigabit backhaul

Easy operation due to automatic control options

NETWORKING FEATURES

- **MAC**
Full-fledged 2nd layer switch
VLAN 802.1q
- **Quality of Service**
IEEE 802.1p support
8 priority queues
- **Proprietary MINT network protocol**
Pseudo-radio interface
Own switch group system
- **DHCP-client**



MANAGEMENT AND SECURITY

■ Various Management Protocols HTTP, HTTPS, SSH, Telnet, SNMP v1/2c/3 (MIB-II and proprietary MIBs)	■ Antenna alignment tool Automatic software update Online monitoring with EMS NEXT WEB GUI	■ Safety & Security Storm/flood protection Password protection Secure CLI access via SSH protocol	■ LED Indication Power status Wired link status
--	--	--	---

STANDARD COMPLIANCE*

■ Radio ETSI EN 301 893 v.2.1.1 ETSI EN 302 502 v.2.1.1 FCC part 15.407	■ EMC ETSI EN 301 489-1 v.2.1.1 ETSI EN 301 489-17 v.3.1.1 FCC Part 15 Class B	■ Safety EN 62368-1:2014+A11:2017 UL 62368-1:2014 EN 62311:2008 RoHS3 EN IEC 63000:2018	■ Lightning protection IEC 61000-4-2: +/-4kV (contact discharge), +/-8kV (air discharge) IEC 61000-4-4: +/-0.5kV IEC 61000-4-5: +/-1kV (line-to-ground), +/-0.5kV (line-to-line)
--	---	---	--

OPERATION OPTIONS

■ Power options 90–240 VAC @ 50/60 Hz ±43.56 VDC 802.3at or Proprietary PoE	■ Outdoor Unit environmental conditions -40..+60°C, can be extended to -55..+60°C (models with "t" index in PN) 100% humidity, condensing	■ Indoor Unit environmental conditions 0..+40°C 95% humidity, non-condensing
--	---	--

*Pending



Astra Wireless Technology. All rights reserved.
www.astrawireless.net
sales@astrawireless.net