

Astrawireless Evolution E6-ST18|50

PRODUCT DATASHEET

Description

Evolution E6-ST18|50, 5+6 GHz subscriber terminal, with integrated antenna 18 dBi

Antenna

Integrated dual-pol antenna, 18 dBi, 18x18°

Recommended distance

Up to 10 km

Frequency range**

4900-6425 MHz

Channel width

10, 20, 40, 80 MHz

Net throughput

Up to 670/780^{hp} Mbps in 80 MHz
Up to 370/380^{hp} Mbps in 40 MHz
Up to 160/165^{hp} Mbps in 20 MHz

Transmit power*

from -5 to 25 dBm
from -5 to 27 dBm^{hp}

Receiver sensitivity

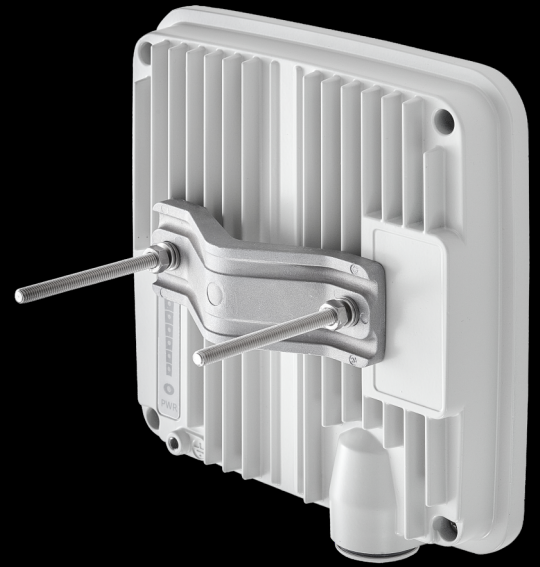
down to -91 dBm
down to -93 dBm^{hp}

Center frequency adjustment step

1 MHz

Duplex scheme

TDD



^{hp} - is a high-power device with an extended energy characteristic and increased throughput

*May be limited by regional EIRP restrictions

**May be limited by regional frequency restrictions



Manufacture: ASTRA WIRELESS TECHNOLOGY FZ-LLC
Brand: ASTRAWIRELESS

Astrawireless Evolution E6-ST18|50

PRODUCT DATASHEET

Wired Interfaces 1x GigabitEthernet

Consumption Up to 15 W

Power options 90-240 VAC ~ @ 50/60 Hz, +-43.56 VDC

Part Number Example E6-ST18|50

Form Factor and Dimensions **Outdoor Unit (ODU)**
188 x 188 x 45 mm, 1.3 kg

Indoor Unit IDU-CPE-G (24W)
97 x 53.5 x 35.5 mm 0.133 kg

Packing List

- Outdoor unit E6-ST18|50- 1 pcs
- Power Supply IDU-CPE-G(24W) - 1 pcs
- Power Cord - 1 pcs
- Cable Gland for RJ-45 - 1 pcs
- Standard RJ-45 connector - 1 pcs
- Shielded RJ-45 connector - 1 pcs
- RJ-45 Plug Cap - 1 pcs
- NutM6 DIN 934 A4 - 2 pcs.
- Washer 6 DIN 125 A4 - 2 pcs.
- Washer 6 DIN 127 A4 - 2 pcs.
- Threaded rod M6x90 DIN976 A4 - 2 pcs.
- Bracer - 1 pcs
- Quick Start Guide - 1 pcs



RADIO FEATURES

- **Radio technology**
MIMO 2x2, OFDM 64/128
- **Modulation types**
From BPSK 1/2 to QAM256 5/6
- **Voice/RTP Aware Superpacketing**
- **Channel Time Adjustment**
Spectrum Analyzer mode
Channel testing tools
- **Air frame Configurable**
from 1 to 10 ms
- **Uplink / Downlink ratio Configurable**
from 50:50 to 92:8, in any direction
- **DFS / Radar detection / Instant DFS**
- **Automatic Bitrate Control**
Automatic Transmit Power Control
Automatic Distance Learning

Wide range of network settings

Built-in spectrum analyzer and antenna alignment tools

Easy operation due to automatic control options

NETWORKING FEATURES

- **Adaptive TDMA air protocol**
Dynamic and fixed air frame duration
Subscriber activity aware scheduling
Permanent channel testing
- **Pseudo-radio interface**
- **Full-fledged 2nd layer switch**
RIPv2 / OSPFv2 /static routing
MAC/IP filtering
L2/L3 Firewall
- **Quality of Service**
IEEE 802.1p, IP TOS/DiffServ support
Full voice support
Traffic limiting (absolute, relative, mixed)
- **Proprietary MINT network protocol**
- **Ethernet-over-IP and IP-over-IP tunnels**
ARP protocol support
NAT (multipool, H.323-aware)
DHCP client/server/relay



MANAGEMENT AND SECURITY

■ Various Management Protocols HTTP, HTTPS, SSH, Telnet, SNMP v1/2c/3 (MIB-II and proprietary MIBs)	■ Antenna alignment tool Automatic software update Online monitoring with EMS NEXT WEB GUI	■ Safety & Security Storm/flood protection Password protection Secure CLI access via SSH protocol	■ LED Indication Power status Wireless and wired link status Signal level
--	--	--	--

STANDARD COMPLIANCE

■ Radio ETSI EN 301 893 v.2.1.1 ETSI EN 302 502 v.2.1.1 FCC part 15.407	■ EMC ETSI EN 301 489-1 v.2.1.1 ETSI EN 301 489-17 v.3.1.1 FCC Part 15 Class B	■ Safety EN 62368-1:2014+A11:2017 UL 62368-1:2014 EN 62311:2008 RoHS3 EN IEC 63000:2018	■ Lightning protection IEC 61000-4-2: +/-4kV (contact discharge), +/-8kV (air discharge) IEC 61000-4-4: +/-0.5kV IEC 61000-4-5: +/-1kV (line-to-ground), +/-0.5kV (line-to-line)
--	---	---	--

OPERATION OPTIONS

■ Power options 90–240 VAC @ 50/60 Hz ±43.56 VDC 802.3at or Proprietary PoE	■ Outdoor Unit environmental conditions -40..+60°C, can be extended to -55..+60°C (models with "t" index in PN) 100% humidity, condensing	■ Indoor Unit environmental conditions 0..+40°C 95% humidity, non-condensing
--	---	--

