

Astra Evolution E6-STE

PRODUCT DATASHEET



Description	Evolution E6-STE, 5+6 GHz subscriber terminal, with 2x N-type (F) connectors
-------------	--

Antenna	2x N-type (F) connectors for external antenna
---------	---

Recommended distance	30+ km
----------------------	--------

Frequency range	4900-6425 MHz
-----------------	---------------

Channel width	20, 40, 80 MHz
---------------	----------------

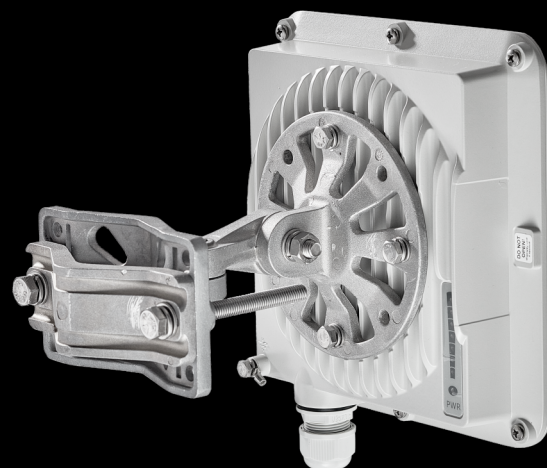
Net throughput	Up to 670 Mbps in 80 MHz Up to 370 Mbps in 40 MHz Up to 160 Mbps in 20 MHz
----------------	--

Transmit power	from -5 to 25 dBm*, step 0.5 dBm
----------------	----------------------------------

Receiver sensitivity	down to -91 dBm
----------------------	-----------------

Center frequency adjustment step	1 MHz
----------------------------------	-------

Duplex scheme	TDD
---------------	-----



*May be limited by regional EIRP restrictions

Astra Evolution E6-STE

PRODUCT DATASHEET

Wired Interfaces 1x GigabitEthernet

Consumption Up to 15 W

Power options 90-240 VAC ~ @ 50/60 Hz, +-43.56 VDC

Part Number E6-STE
Example

Form Factor and Dimensions Outdoor Unit (ODU)
180x190x86 mm, 1.2 kg

Indoor Unit IDU-CPE-G (24W)
97 x 53.5 x 35.5 mm 0.133 kg

Packing List

- Outdoor unit E6-STE- 1 pcs
- Power Supply IDU-CPE-G(24W) - 1 pcs
- Power Cord - 1 pcs
- Cable Gland for RJ-45 - 1 pcs
- Standard RJ-45 connector - 1 pcs
- Shielded RJ-45 connector - 1 pcs
- RJ-45 Plug Cap - 1 pcs
- MONT-KIT-85 Mounting kit - 1 pcs.
- Quick Start Guide - 1 pcs

RADIO FEATURES

- **Radio technology**
MIMO 2x2, OFDM 64/128
- **Modulation types**
From BPSK 1/2 to QAM256 5/6
- **Voice/RTP Aware Superpacketing**
- **Channel Time Adjustment**
Spectrum Analyzer mode
Channel testing tools
- **Air frame Configurable**
from 1 to 10 ms
- **Uplink / Downlink ratio Configurable**
from 50:50 to 92:8, in any direction
- **DFS / Radar detection / Instant DFS**
- **Automatic Bitrate Control**
Automatic Transmit Power Control
Automatic Distance Learning

Wide range of
network settings

Built-in spectrum analyzer
and antenna alignment tools

Easy operation due to
automatic control options

NETWORKING FEATURES

- **Adaptive TDMA air protocol**
Dynamic and fixed air frame duration
Subscriber activity aware scheduling
Permanent channel testing
- **Quality of Service**
IEEE 802.1p, IP TOS/DiffServ support
Full voice support
Traffic limiting (absolute, relative, mixed)
- **Pseudo-radio interface**
- **Proprietary MINT network protocol**
- **Full-fledged 2nd layer switch**
RIPv2 / OSPFv2 /static routing
MAC/IP filtering
L2/L3 Firewall
- **Ethernet-over-IP and IP-over-IP tunnels**
ARP protocol support
NAT (multipool, H.323-aware)
DHCP client/server/relay



Astra Wireless Technology. All rights reserved.
www.astrawireless.net
sales@astrawireless.net

MANAGEMENT AND SECURITY

■ Various Management Protocols HTTP, HTTPS, SSH, Telnet, SNMP v1/2c/3 (MIB-II and proprietary MIBs)	■ Antenna alignment tool Automatic software update Online monitoring with EMS NEXT WEB GUI	■ Safety & Security Storm/flood protection Password protection Secure CLI access via SSH protocol	■ LED Indication Power status Wireless and wired link status Signal level
--	--	--	--

STANDARD COMPLIANCE

■ Radio ETSI EN 301 893 v.2.1.1 ETSI EN 302 502 v.2.1.1 FCC part 15.407	■ EMC ETSI EN 301 489-1 v.2.1.1 ETSI EN 301 489-17 v.3.1.1 FCC Part 15 Class B	■ Safety EN 62368-1:2014+A11:2017 UL 62368-1:2014 EN 62311:2008 RoHS3 EN IEC 63000:2018	■ Lightning protection IEC 61000-4-2: +/-4kV (contact discharge), +/-8kV (air discharge) IEC 61000-4-4: +/-0.5kV IEC 61000-4-5: +/-1kV (line-to-ground), +/-0.5kV (line-to-line)
--	---	---	--

OPERATION OPTIONS

■ Power options 90–240 VAC @ 50/60 Hz ±43..56 VDC 802.3at or Proprietary PoE	■ Outdoor Unit environmental conditions -40..+60°C, can be extended to -55..+60°C (models with "t" index in PN) 100% humidity, condensing Dust and water protection IP66, IP67 Wind load 160 km/h, operational; 200 km/h, survival	■ Indoor Unit environmental conditions 0..+40°C 95% humidity, non-condensing
---	--	--