

Astra Evolution E6-ST18

PRODUCT DATASHEET



Description Evolution E6-ST18, 5+6 GHz subscriber terminal, with integrated antenna 18 dBi

Antenna Integrated dual-pol antenna, 18 dBi, 18x18°

Recommended distance Up to 10 km

Frequency range 4900-6425 MHz

Channel width 20, 40, 80 MHz

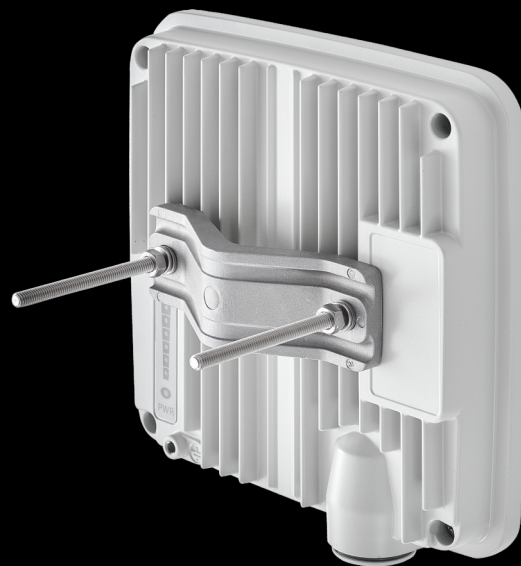
Net throughput Up to 670 Mbps in 80 MHz
Up to 370 Mbps in 40 MHz
Up to 160 Mbps in 20 MHz

Transmit power from -5 to 25 dBm*, step 0.5 dBm

Receiver sensitivity down to -91 dBm

Center frequency adjustment step 1 MHz

Duplex scheme TDD



*May be limited by regional EIRP restrictions

Astra Evolution **E6-ST18**

PRODUCT DATASHEET

Wired Interfaces

1x GigabitEthernet

Consumption

Up to 15 W

Power options

90-240 VAC ~ @ 50/60 Hz, +-43.56 VDC

Part Number Example

E6-ST18

Form Factor and Dimensions

Outdoor Unit (ODU)
188 x 188 x 45 mm, 1.3 kg

Indoor Unit IDU-CPE-G (24W)
97 x 53.5 x 35.5 mm 0.133 kg

Packing List

- Outdoor unit E6-ST18- 1 pcs
- Power Supply IDU-CPE-G(24W) - 1 pcs
- Power Cord - 1 pcs
- Cable Gland for RJ-45 - 1 pcs
- Standard RJ-45 connector - 1 pcs
- Shielded RJ-45 connector - 1 pcs
- RJ-45 Plug Cap - 1 pcs
- NutM6 DIN 934 A4 - 2 pcs.
- Washer 6 DIN 125 A4 - 2 pcs.
- Washer 6 DIN 127 A4 - 2 pcs.
- Threaded rod M6x90 DIN976 A4 - 2 pcs.
- Bracer - 1 pcs
- Quick Start Guide - 1 pcs

RADIO FEATURES

- **Radio technology**
MIMO 2x2, OFDM 64/128
- **Modulation types**
From BPSK 1/2 to QAM256 5/6
- **Voice/RTP Aware Superpacketing**
- **Channel Time Adjustment**
Spectrum Analyzer mode
Channel testing tools
- **Air frame Configurable**
from 1 to 10 ms
- **Uplink / Downlink ratio Configurable**
from 50:50 to 92:8, in any direction
- **DFS / Radar detection / Instant DFS**
- **Automatic** Bitrate Control
Automatic Transmit Power Control
Automatic Distance Learning

Wide range of
network settings

Built-in spectrum analyzer
and antenna alignment tools

Easy operation due to
automatic control options

NETWORKING FEATURES

- **Adaptive TDMA air protocol**
Dynamic and fixed air frame duration
Subscriber activity aware scheduling
Permanent channel testing
- **Quality of Service**
IEEE 802.1p, IP TOS/DiffServ support
Full voice support
Traffic limiting (absolute, relative, mixed)
- **Pseudo-radio interface**
- **Proprietary MINT network protocol**
- **Full-fledged 2nd layer switch**
RIPv2 / OSPFv2 /static routing
MAC/IP filtering
L2/L3 Firewall
- **Ethernet-over-IP and IP-over-IP tunnels**
ARP protocol support
NAT (multipool, H.323-aware)
DHCP client/server/relay



Astra Wireless Technology. All rights reserved.
www.astrawireless.net
sales@astrawireless.net

MANAGEMENT AND SECURITY

■ Various Management Protocols HTTP, HTTPS, SSH, Telnet, SNMP v1/2c/3 (MIB-II and proprietary MIBs)	■ Antenna alignment tool Automatic software update Online monitoring with EMS NEXT WEB GUI	■ Safety & Security Storm/flood protection Password protection Secure CLI access via SSH protocol	■ LED Indication Power status Wireless and wired link status Signal level
--	--	--	--

STANDARD COMPLIANCE

■ Radio ETSI EN 301 893 v.2.1.1 ETSI EN 302 502 v.2.1.1 FCC part 15.407	■ EMC ETSI EN 301 489-1 v.2.1.1 ETSI EN 301 489-17 v.3.1.1 FCC Part 15 Class B	■ Safety EN 62368-1:2014+A11:2017 UL 62368-1:2014 EN 62311:2008 RoHS3 EN IEC 63000:2018	■ Lightning protection IEC 61000-4-2: +/-4kV (contact discharge), +/-8kV (air discharge) IEC 61000-4-4: +/-0.5kV IEC 61000-4-5: +/-1kV (line-to-ground), +/-0.5kV (line-to-line)
--	---	---	--

OPERATION OPTIONS

■ Power options 90–240 VAC @ 50/60 Hz ±43..56 VDC 802.3at or Proprietary PoE	■ Outdoor Unit environmental conditions -40..+60°C, can be extended to -55..+60°C (models with "t" index in PN) 100% humidity, condensing Dust and water protection IP66, IP67 Wind load 160 km/h, operational; 200 km/h, survival	■ Indoor Unit environmental conditions 0..+40°C 95% humidity, non-condensing
---	--	--